



GS BOUTIQUE
PROPERTY



Level 3/305/18 Ebsworth Street Zetland NSW

2 2 1

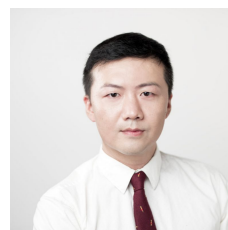
THIS 112SQM MASTERPIECE

Displaying all the quality and excellence of its Mirvac build, this contemporary urban retreat is a cut above its peers. Every luxurious detail is included in this family-sized pad that rests right at the heart of Green Square Town Centre. Steps away from train station, supermarket and cafes.

Building Size : 97 sqm
Land Size : 112 sqm
View : <https://www.gsproperty.co/sale/nsw/east-ern-suburbs/zetland/residential/apartment/6182130>

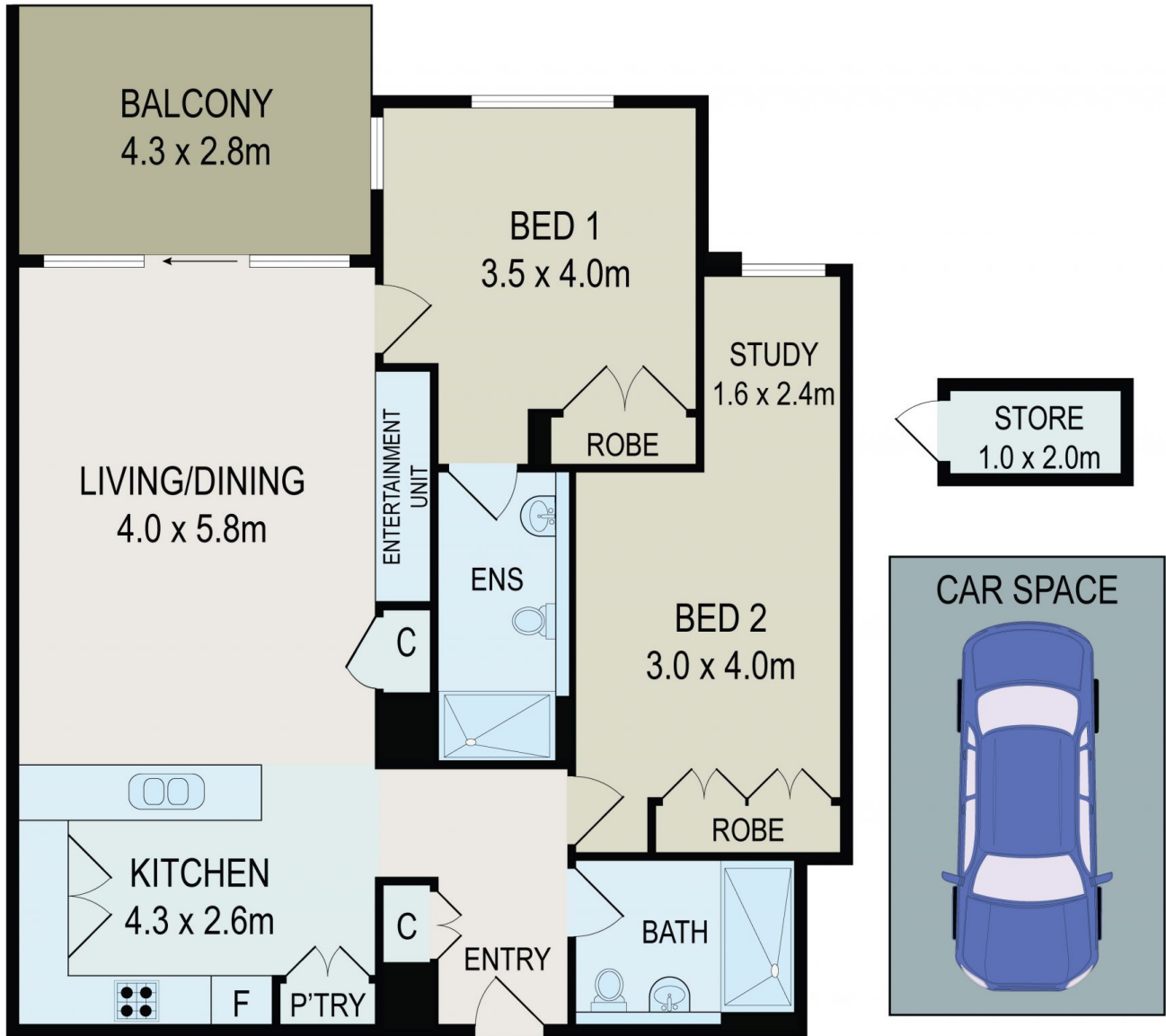
WHAT YOU COULD EXPECT

- Attractive security building with architectural common spaces
- Light filled interiors feature open plan living and dining, with built-in TV unit
- Modern kitchen with stone benchtops and Smeg appliances
- Generously sized bedrooms with built-ins and data points



Gary Shi
02 8066 9042

<https://www.gsproperty.co>



All information contained herein is gathered from all sources we believe to be reliable. However we cannot guarantee its accuracy and interested parties should rely on their own enquiries.

